

FIXTURES THIS WEEKEND

Old Reigatians v Gravesend - KO 14:00
Gravesend II v Canterbury III - KO 14:00
Gravesend III v Medway IV - KO 14:00
Gravesend IV v Sheppy II - KO 14:00

25/
26

GRAVESEND RFC

GRAVESENDRFC.CO.UK REGIONAL 2 SOUTH EAST // 6 Dec 2025



GRAVESEND
RUGBY CLUB

CONTENTS



MATCH DAY PHOTOS



GRFC SECTIONS

SOCIAL RUGBY

MINI & YOUTH

WHEELCHAIR RUGBY

PETANQUE

CRICKET

A FEW WORDS

MARK BRUCE - CHAIRMAN

MATCH REPORT

TEAMS & RESULTS

1XV LINE UP

2XV LINE UP

FIXTURES

LEAGUE TABLES

PLAYER SPONSORS

OUR SPONSORS

LUNCH DATES

UPCOMING EVENTS

Christmas Lunch
20th December **SOLD OUT**

Skatonics
31st January 2026

Mayor's TRUSS Lunch
7th March 2026

DECEMEBER RAIN

MARK BRUCE

Well the weather has turned. Pitches and in particular the training area are wet underfoot (understatement) and people start looking forward towards Christmas. It's this time of year that strength in depth of your squad really starts to test you. Thankfully training numbers have remained good under the stewardship of Sam Howard and the 1st XV can look forward to the next few games with a degree of confidence after a fine win against Battersea Ironsides last time out.

In front of a large and boisterous Captains Day crowd amid calls of 'Hiya Jerry' the 1st XV treated spectators to a glorious game of open flowing rugby. The Players Bar delivered everything we hope for afterwards and people stayed long into the evening.

This week the 1s travel to Old Reigatians, scene of last season's Escape to Victory (or avoid relegation) in the last minute of the last game to send the travelling fans into raptures. Hopefully a similar result this week.

The 2s and 3s had very competitive games last time out against Tunbridge Wells and TJs respectively although both came out second best eventually. Our Women travelled to Sittingbourne on the Sunday and earned a commendable victory. This weekend turns to Canterbury IIs for the 2s as they seek to get back to winning ways and rumour has it we may even have 4 teams out once again.

This weekend sees the return of the Moles Ball, so well done to Neil Martin for putting that together. Next up we have the Moles Christmas Panto where those of a delicate disposition are advised to look the other way. As you can see it's all go around the club this time of year but do make time to pop down and offer your support.

In other news well done to the Gravesend lads that turned out for Kent U18s in a match against Essex, highlighting the strength of the Academy, and also good luck to GGS in their National Bowl Quarter Final this week.

Come on you Gssss



GRAVESEND RFC 57 - BATTERSEA IRONSIDES 15

MATCH REPORT



Gravesend made hay in front of a large and vocal crowd to deliver arguable their best performance of the season and run out 57-15 winners against Battersea Ironsides.

Having been on the receiving end in recent encounters between the sides Gravesend knew they had to put in a performance to get the win to keep them at the right end of the table.

What unfurled was an entertaining affair despite the heavy conditions and blustery wind. After an early score from a sniping run by scrum half Ned Warren, Battersea had their best spell which saw them score out wide.

The backs started to play and with good ball secured it was not long before Gravesend started to make their dominance up front count. Andrew Cooke, Rocky Sims and hat-trick hero Ben Hope all added to the first half tally. With the trusty boot of full back Josh Barnes the scored turned round 28-10.

What could have been a testy half had Battersea scored first was over in a clinical 10 minute spell when firstly Rhys Betts, then Zac Filmer and a brace by Man of the Match Ben Hope put the result beyond all doubt.

The visitors did not give up though and scored a fine try following some slick passing and a miss move out wide allowing the winger to touch down.

It was left to Barnes to seal the victory with the final kick of the game and ensure Gravesend started looking up rather than down the table.

Next week Gravesend are away at Old Reigatians.

Match Report - Mark Bruce
Photos - JP72Photography

GRFC 1XV

- 1 Nathan Alderson
- 2 Lewis White
- 3 Chris Shorter
- 4 Josh Mackenzie
- 5 Les Falefatu
- 6 Matt Bruce
- 7 Bailey Williams
- 8 Samraj Chahal
- 9 Matt Brady
- 10 George Bruce
- 11 Andrew Cooke
- 12 Ethan Sims
- 13 Zac Filmer
- 14 Ben Hope
- 15 Josh Barnes

FINISHERS:

Henry Falconar
Josh Harris
Rhys Betts

Coaching Staff:

Director Of Rugby - James Percy
Head Coach - Sam Howard
Assistant Coach - Dave Dorton
Assistant Coach - Chris Venter
1st Xv Manager - Phil Spain
Head Physio - Rolandas Mizgeris



GRFC 2XV

- 1 Jon Sargent
- 2 Ed Moore
- 3 Jamie Forsyth
- 4 Jem Sagay
- 5 Ziggy Stevens
- 6 Toby Emery
- 7 Henry Morris
- 8 Tom Moore
- 9 Ben Stelfox
- 10 Finley White
- 11 Josiah Bennett
- 12 Harvey Dean
- 13 Euan Huckle
- 14 Sam Curtis
- 15 Jack King

FINISHERS

Ben Kite
Paul Ekpe
Max Sullivan

Coaching Staff:

Director Of Rugby - James Percy
Head Coach - Sam Howard
Assistant Coach - Dave Dorton
Assistant Coach - Chris Venter
1st Xv Manager - Phil Spain
Head Physio - Rolandas Mizgeris



1XV FIXTURES

6 Sept - Horsham - 1500 - A	10 Jan - Sidcup - 1500 - A
13 Sept - Old Colfeians - 1500 - H	17 Jan - Brighton - 1500 - H
20 Sept - Canterbury II - 1500 - A	31 Jan - Sutton & Epsom - 1400 - A
1 Oct - Sidcup - 1500 - H	14 Feb - Bromley - 1500 - H
11 Oct - Brighton - 1400 - A	28 Feb - Beckenham - 1400 - A
18 Oct - Sutton & Epsom - 1500 - H	7 Mar - Dartfordians - 1500 - H
25 Oct - Bromley - 1400 - A	21 Mar - Battersea Ironsides - 1400 - A
8 Nov - Beckenham - 1500 - H	28 Mar - Old Reigatians - 1500 - H
22 Nov - Dartfordians - 1400 - A	11 Apr - Horsham - 1500 - H
29 Nov - Battersea Ironsides - 1500 - H	
6 Dec - Old Reigatians - 1400 - A	
13 Dec - Old Colfeians - 1400 - A	
20 Dec - Canterbury II - 1500 - H	

FIXTURES

2XV FIXTURES

6 Sept - Old Dunstonians - H - 1500	10 Jan - Sittingbourne - H - 1500
13 Sept - Sittingbourne - A - 1400	17 Jan - Old Williamsons - A - 1400
4 Oct - Old Williamsons - H - 1400	24 Jan - New Ash Green - H - 1500
11 Oct - New Ash Green - A - 1400	14 Feb - Old Gravesendians - A - 1400
18 Oct - Old Gravesendians - H - 1500	28 Feb - Brockleians - H - 1500
8 Nov - Brockleians - A - 1400	7 Mar - Whistable - A - 1400
22 Nov - Whistable - H - 1500	21 Mar - Tunbridge Wells II - A - 1400
29 Nov - Tunbridge Wells II - H - 1400	28 Mar - Canterbury III - A - 1400
6 Dec - Canterbury III - H - 1400	11 Apr - Hastings & Bexhill - A - 1400
13 Dec - Hastings & Bexhill - H - 1500	18 Apr - Dartford Valley - H - 1500
20 Dec - Dartford Valley - A - 1400	25 Apr - Old Dunstonians - A - 1500

LADIES FIXTURES

21 Sept - Old Gravesendians - 1400 - H

5 Oct - Tonbridge Juddian - 1400 - H

19 Oct - Cranbrook - 1400 - PP

9 Nov - Tunbridge Wells - 1400 - H

14 Dec - Sheppey - 1400 - H

11 Jan - Maidstone - 1400 - A

18 Jan - Tonbridge Juddian - 1400 - A

8 Feb - Cranbrook - 1400 - H

22 Feb - Tunbridge Wells - 1400 - A

22 Mar - Sheppey - 1400 - A

29 Mar - Maidstone - 1400 - H

26 Apr - Old Gravesendians - 1400 - A

LADIES FIXTURES

LEAGUE TABLES

Mens 1XV

Regional 2 South East | London & SE Division

Mens 2XV

Counties 3 Kent

Mens 3XV

Kent Rural C

Mens 4XV

Kent Rural C

Ladies 1XV

Womens NC2 South East (East).

LEAGUE TABLE

PLAYER SPONSORS

MENS SENIOR SQUAD

Andrew Cooke - Quantum Intelligence
Gvidas Kuzminskas - Kuzkraft Carpentry LTD
Bailey Williams - Itow Rescue & recovery
Ben Stelfox - M&S Resin
Chris Shorter - Diamond Dogs
Chris Brady - Glenys Johnston
Ned Warren - Red Street Garage
Samraj Chahal - Glen & Joanne Thomas
Stan Dadson - Harlex
Zac Filmer - Play Pavillion Pre-School
Sam Filmer - Filmer Farms
Lewis White - Traditional English Guncases
Ed Moore - Opal (Stefan Dodd)
Ethan Sims (Rocky) - Graham Sims
Bradley Money - The Bowler Family
Manny Bakare - Faith Montessori Nursery
Josh MacKenzie - TRUSS
Lez Falefatu - TRUSS
Jack King - AERO

Oliver Bakker - The Bakker Family
Harry Brooker - M&S Resin
Matt Bruce - The Bruce Family
George Bruce - The Bruce Family
Nathan Alderson - Nathan and Joanne Stapley
Harry Gagg - The Dadson Family
Ben Kite - Kate and Beryl Howard
Josh Barnes - Jubalee Beach Park Family
Camping & Trailer Park
Josh Harris - The Harris Family
Brian Williams - The Warren Family
Harvey Dean - Water Process Solutions
Harrison Dean - Water Process Solutions
Ben Hope - The Hope Family
Sam Curtis - The Hope Family
Callum Smith - Hoopers & Sons
Matt Brady - Howden Insurance

WOMENS SENIOR SQUAD

Lacy Martin - M&S Resin
Sophie Bowler - The Bowler Family
Becki Curtis - Glenys Johnston
Grace Cranham - RKM Building & Roofing
Fran Holmes - TWS Consultancy
Taylor Williams - GRFC Bar Staff
Bec Giles - ANA Therapies
Molly Burnett - Glen & Joanne Thomas
Nikki Loines-Newman - Albus
Holly Errington - The Funding Circle
Amy Pitzey - Magrock
Stacey Sewell - Euroclad
Jacquie Taylor - UKPN

SHIRT SPONSORS

MENS SENIOR SQUAD



1 - R.Bardell



2 - G.Johnston



3 - J.Hails



4 - M.Cubitt



5 - IMO
B.Curtis



6 - G.Haggar



7 - P.Fielding



8 - IMO
J.Moxham



9 - D.Boyd



10 - M.Delay



11 - A.Coombes



12 - The
Cubitt Family



13 - G.Coleman



14 - Available



15 - A.Love



16 - Chic Event



17 - R.Gagg



18 - J.Bowler

Head Coach - Friday Club | Assistant Coach - P.Barber | Assistant Coach - Chic | Physio - IMO B.Greenfield

WOMENS SENIOR SQUAD



1 - T.Datlen



2 - Available



3 - T.Datlen



4 - Available



5 - Bradfords
Backyard BBQ



6 - S.Bone



7 - G.Johnston



8 - Available



9 - Available



10 - Available



11 - Available



12 - Available



13 - Available



14 - Available



15 - Available



16 - Available



17 - Available



18 - Available

OUR SPONSORS

GRAVESEND RFC

REGIONAL 2 SOUTH EAST

25/
26

SEASON

Evening
Standard
NEW HOMES AWARDS 2022
WINNER

NEW HOMES FROM AWARD-WINNING DEVELOPER

Developments across Kent & Sussex

Showhome & Sales Suite Open

MAKE YOUR DREAM HOME A REALITY TODAY!

COMMERCIAL

RESIDENTIAL

LAND & PLANNING

01474 706 184

ESQUIRE
DEVELOPMENTS

albus environmental

Quick Contact

03330 156321

info@albusenvironmental.com

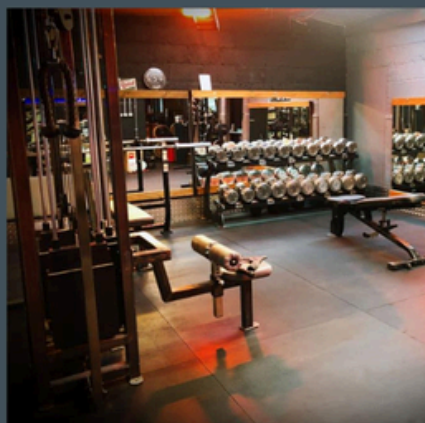


**Sustainable healthcare and
hazardous waste disposal**



Nurstead Court Weddings and Events

Manor house and marquee set in beautiful grounds, perfect for weddings, celebrations, events and wakes.



Nurstead Court Fitness

Providing 1-2-1, group training and bootcamp sessions, with access to both indoor and outdoor facilities.



Nurstead Court Wellbeing

A tranquil spot to enjoy an array of beauty & wellbeing treatments. From nails and lashes to massage and more.



Nurstead Court Accommodation

A lovingly restored stable cottage and 3 shepherds huts, all the perfect spot for a short stay in a beautiful location.

Use any of the facilities at Nurstead Court and they will donate **10% cashback** to the Gravesend Rugby Club, In particular the Gravesend Ladies Rugby team.



RECTORY
FIELD
EVENTS

Looking for the perfect
party venue?

Look no further, Rectory Field
Events is a versatile venue suitable
for all occasions!

Find out more:

www.rectoryfieldevents.co.uk

Hooper & Sons LTD

GROUNDWORK CONTRACTORS

- Site Clearance
- Basement Excavation & Construction
- Foundations & Underpinning
- Surface & Foul Water Drainage
- Roadways & Footpaths
- Driveways & Patios
- S278 Works
- Soft & Hard Landscaping
- Transport & Haulage Services
- Plant & Machinery Maintenance Services

Please get in touch to discuss your groundwork needs...



info@hooperandsons.co.uk

www.hooperandsons.co.uk

01474 815554



KING & TAYLOR



www.kingandtaylor.co.uk
info@kingandtaylor.co.uk



**Your local friendly accountants
and tax advisers**

01474 569777

**Your local friendly accountants
and tax advisers**



www.claytonstirling.co.uk
accounts@claytonstirling.co.uk

CLAYTON STIRLING



Get involved

and make a difference
to your local charity

FUNDRAISING

CORPORATE PARTNERSHIPS

STORY SHARING

CAREERS

SUPPORTING

VOLUNTEERING

... and much more



FIND OUT MORE

FIND OUT MORE

ellenor.org/support-us

[f](#) [i](#) [i](#) [x](#) @ellenorcharity

Registered charity no. 1121561

ellenor.x
hospice care in your home or ours



the
estate
agency

Tackling Real Estate, One Move at a Time!



JAGS PROPERTY GROUP

www.jagspropertygroup.com

☎ 01474 643 101

✉ joshua.smith@theestate.agency

f @jagspropertygroup

"My family has been associated with GRFC since 1999. I started playing for the club through the minis, the academy and then into the senior and now the first team and so therefore I am now a sponsor for the club."

If you need any help or advice for selling or renting your home, then please feel free to get in touch!"

Joshua Smith

Earn up to 9.13%^{*†}



Your Investment Alternative

Auto Invest

- IF-ISA Eligible
- 1, 2 & 3 Year Terms
- Diversify funds across multiple secured loans*

Contact:

Tel: 01474 33 44 88 (option 2)

Email: hello@kuflink.com

Web: www.kuflink.com



* Don't invest unless you're prepared to lose money. This is a high-risk investment. You may not be able to access your money easily and are unlikely to be protected if something goes wrong.

† Gross annual interest equivalent rate

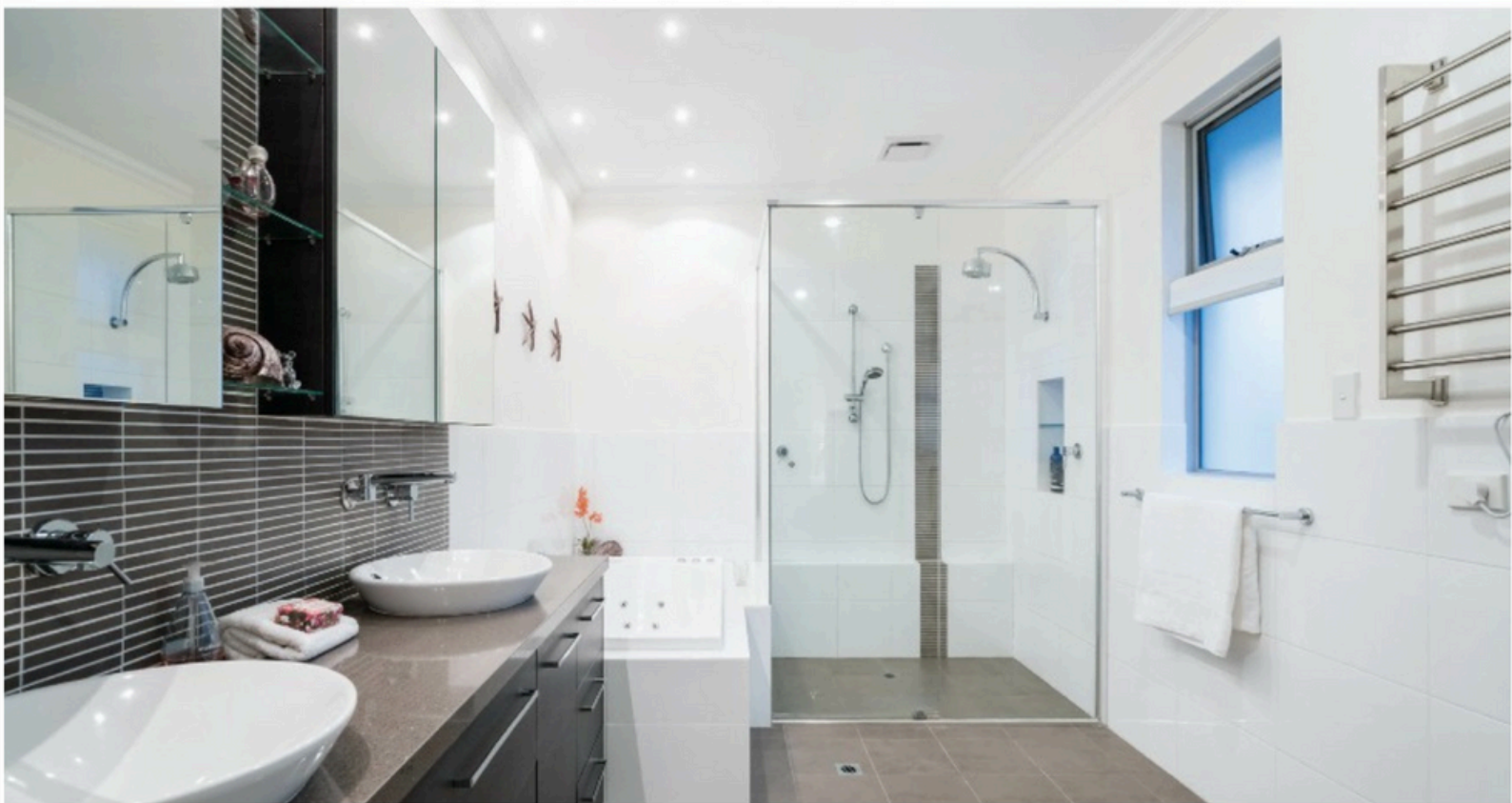
† Secured on fixed charge (e.g. property) and/or floating charge

ChalkPlumbing

Supplies

Open 6 days a week
Mon-Fri 8am-5.30pm
Sat 9am-5.30pm

**One Stop Shop - For Trade & Public
Plumbing, Heating & Bathrooms**



Tel: 01474 365304

www.chalkplumbingsuppliesuk.co.uk

75 Lower Higham Road, Gravesend DA12 2NQ

ohob.com

O'HALLORAN & O'BRIEN LTD **BUILDING CONTRACTORS**



OHOB Group

OHOB | www.ohob.com

B&T Plant Hire | www.bandtplanthire.co.uk/

Riverdale Developments

www.riverdale-developments.co.uk/

OHOB Training Academy

www.ohobtrainingacademy.co.uk/

NOW RECRUITING

Call us now on:
020 8337 5527

WELCOME TO MCCARTHY STONE WE OFFER YOU MORE THAN A STYLISH NEW HOME



We pour our heart and soul into creating thoughtfully designed developments for over 60s where communities flourish, and life can be enjoyed your way.

McCarthy Stone currently offer a selection of one and two bedroom properties across the South East, including a choice of Kent locations. Register your interest today to find out more.

MCCARTHY STONE

Life, well lived

Call **0800 310 0866** or visit mccarthyandstone.co.uk/kent/

Prolojik Proudly Supporting



Gravesend RFC

Gravesend RFC

Season 2025 - 2026

Womens Rugby



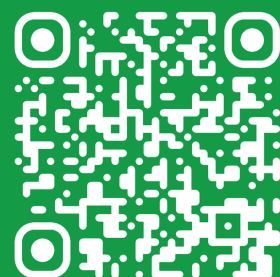
Visit our website

Scan the QR code



**YOUR LOCAL
PROPERTY EXPERTS**

PROUD SPONSORS



Instant Valuation



**KENT
BUILDERS
MERCHANTS**



SILVERHAND ESTATE



Nestled in the heart of Luddesdown, Silverhand Estate is bringing new life to the Garden of England through its vast vineyard landscape and grapes of the finest quality.

THE FUTURE IS SPARKLING

WWW.SILVERHANDESTATE.COM



DS LUXURY TRAVEL

ARRIVE IN STYLE. TRAVEL IN COMFORT



FAMILY RUN PRIVATE HIRE LUXURY
TAXI SERVICE

COVERING LONGFIELD AND SURROUNDING
AREAS FOR LONDON AIRPORT TRANSFERS,
BUSINESS & SOCIAL EVENTS

CONTACT US FOR A QUOTE
DARREN SMITH

📞 07930 348244

☎ 01474 654025

✉ INFO@DSLUXURYTRAVEL.CO.UK

🌐 WWW.DSLUXURYTRAVEL.CO.UK



NO GLASS OUTSIDE
NO BOOTS INSIDE

Thank you in advance



Gravesend RFC

OPAL

Temporary Access Ltd

T: 01474 568100

www.opaltemporaryaccess.com



**Gravesend Grammar
School**



Clubb
Concrete Ltd

01322 225431 (option 3)
SalesCC@clubbconcrete.co.uk



Clubb
Sand and Gravel Limited

01322 225431 (Option 1)
Sales@clubbsandandgravel.co.uk

Proud sponsors of Gravesend RFC

STOREFAST SOLUTIONS

CONTRACT MANUFACTURING FOR
THE FOOD & DRINK INDUSTRY

Storefast  Solutions

SCAN FOR OUR WEBSITE



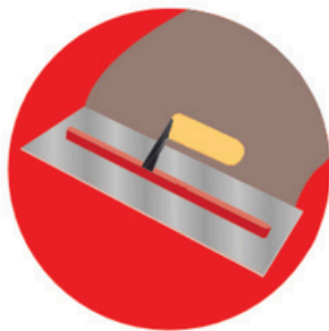
HUNTERS[®]

HERE TO GET *you* THERE

Sales and lettings

SALES / LETTINGS / MANAGEMENT / HUNTERS.COM

01474 333266



M&S RESIN

Contracts Limited

Epoxy Resin Flooring systems and solutions

Tel: 07739 714774



Three Daws

Historic Riverside Inn

Town Pier, Gravesend DA11 0BJ

01474 566869

Wedding Receptions * Parties * Discos * BBQs * Quiz Nights *

Fine Wines, Real Ales & Good Food

www.threedaws.co.uk



CHALK COMPUTER CENTRE

LOW COST COMPUTER REPAIR

Mark Fitchett M.C.P

Phone: 07459023354

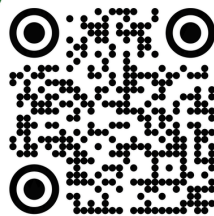
Email: sales@chalkcomputercentre.co.uk

Microsoft®

CERTIFIED

Professional

RECYCLING FOR A BETTER FUTURE



RECMAT

recmat.co.uk



GASCADE

PLUMBING/HEATING

MODERN CONSTRUCTION
LASTING FOUNDATIONS



FRY | SITE
SERVICES

frysiteservices.co.uk



LUNCH DATES

**Captains Day
29th November 2025**

**Christmas Lunch
20th December 2025**

**Mayor's TRUSS Lunch
7th March 2026**

**Vice Presidents Lunch
11th April 2026**

GRFC SECTIONS

RUGBY

MINI & YOUTH RUGBY

WHEELCHAIR RUGBY

TENNIS

CRICKET

PETANQUE



GRAVESEND RFC

25/
26